



*i3*

**4D Color Doppler**  
Fast • Light • Quiet • Smart

# Better Technologies



The revolutionary i3 provides you outstanding 2D images and fast 4D volume images, while the streamlined workflow makes your busy practices much easier and more efficient.

# Better



**Light**

Light probe  
Releases doctors from  
scanning fatigue

**Smart**

Smart function  
The latest technologies:  
compound, i-Image , SRA, etc.  
provide superb image

**Quiet**

Quiet probe  
Vibration-free & Noise -free  
probe allows better  
care for mother and fetus

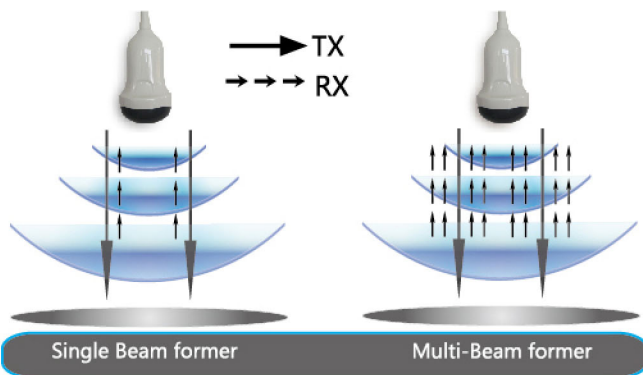
**Fast**

Fast speed  
4D volume rate reveals  
fetal movement in real  
time

**4T**

# Advanced Imaging Technologies

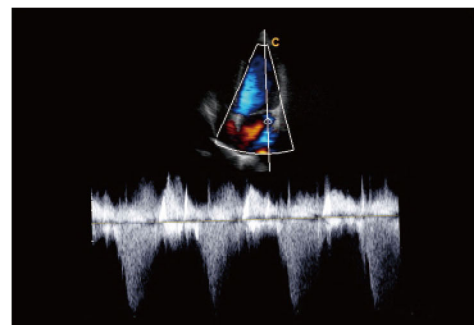
## Multi-beam former technology



- Enhance signal processing speed
- Enhance time resolution
- Improve spatial resolution

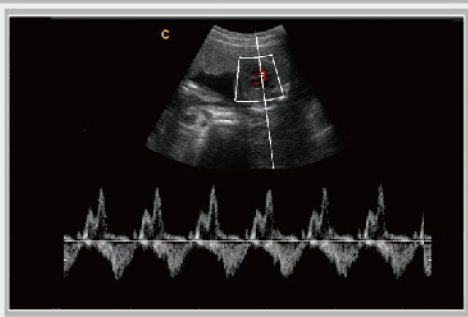
## Continuous Wave (CW) Doppler

CW is absolutely necessary for cardiac ultrasound to detect blood flow with high velocity and help doctors diagnose with more clinical information.

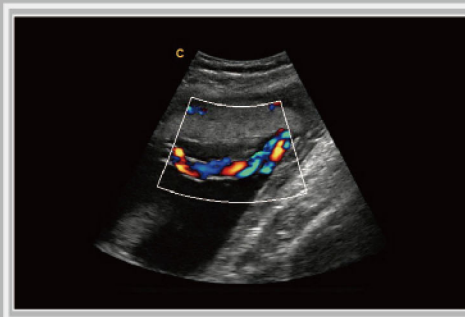




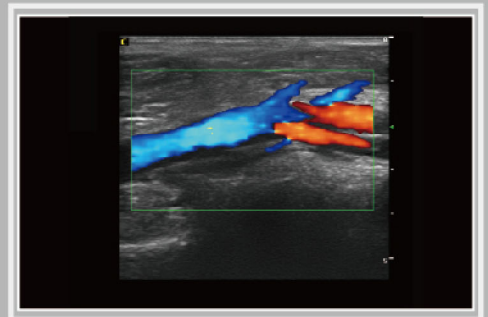
# Clinical Value and Applications



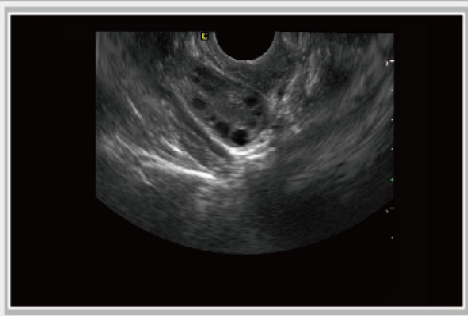
Fetal Heart, PW Mode



Umbilical Cord, CFM Mode



Popliteal Vein, CFM Mode



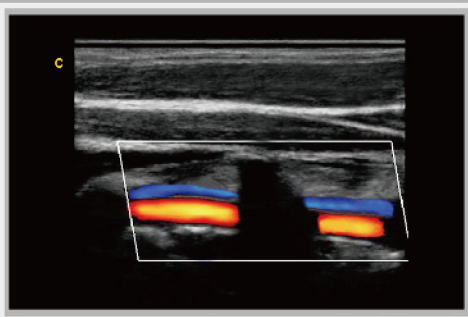
Ovary, B Mode



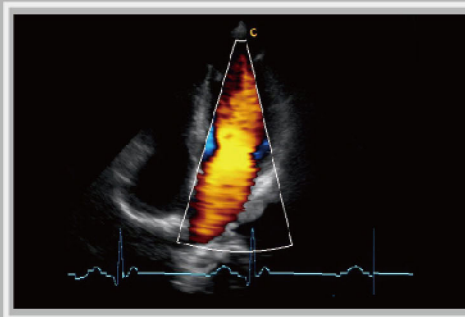
Early Pregnancy, B Mode



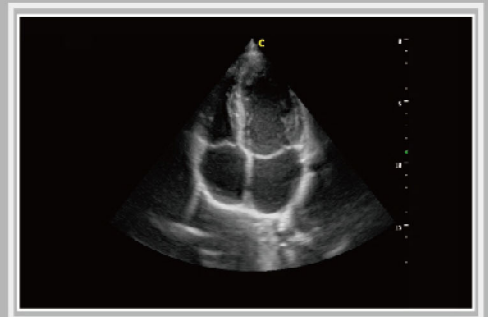
Fetal Face, 31 Weeks



Vertebral Artery, CFM Mode



Four Chambers View, ECG



Apical 4 Chambers, B Mode

# Specifications

## Imaging modes

- B, 2B, 4B, B/M, M
- CFM
- PW Mode
- Power Doppler / Directional PD
- Trapezoidal
- Real-time 4D (Option)
- Chroma B/PW
- CW (Option)

## Probes

- Convex probe
- Linear probe
- Transvaginal probe
- Phased array probe
- Micro-Convex probe
- 4D Volume probe

## Image processing technology

- THI
- Speckle Reduction Algorithm (SRA)
- Compound technology
- i-Image : image optimization software

## Measurement & Report packages

- OB&GYN
- Vascular
- Urology
- Small parts
- Cardiac

## Widely Clinical Applications

- Abdominal
- Obstetrics
- Gynecology
- Cardiac
- Vascular and Small parts
- Pediatric
- Urology
- Musculoskeletal

## Standard configuration

Main unit, 19" LCD, 4 probe connectors, Hard disk (320GB), DVD-RW, 6 USB ports

## Options

- 2.5MHz-5.3MHz Convex probe
- 5.0MHz-10.0MHz Linear probe
- 4.0MHz-10.7MHz Linear probe (60mm)
- 4.0MHz-10.0MHz Transvaginal probe
- 4.0MHz-10.7MHz Transvaginal probe
- 2.5MHz-4.0MHz Phased array probe
- 4.0MHz-10.7MHz Micro-Convex probe
- 2.5MHz-6.4MHz Micro-Convex probe (adult Cardiac)
- 3.5MHz-8.0MHz Micro-Convex
- CW
- ECG
- 4D package: including 2.5MHz-5.3MHz 4D volume probe, 4D software and 4D hardware module
- Video printer(SONY UP-X898MD),PC printer(HP Pro P1102W & HP Pro 200 M251n & Canon selphy cp910)
- DICOM 3.0
- i-Image: image optimization software
- Biopsy kit: for convex, linear,TV probe
- Foot-switch

## Corporate Office

 MDX® Instruments

Address: No.2 Central Avenue, Bridgeport, Connecticut, U.S.A 6605  
Homepage: [www.mdxinstruments.com](http://www.mdxinstruments.com) E-mail: [info@mdxinstruments.com](mailto:info@mdxinstruments.com)

MDX® Instruments reserves the right to make changes; including change in price, content, description, terms, appearance etc. at any time without prior notice.

We reserve the right to make changes to this catalogue without prior notice  
Please contact our local dealer for the latest information.

Ei3 20151019